 <p><b>iNNO PLORE</b> EXPLORING THE LATEST INNOVATIONS</p>	
	<p><b>iX-G25 GPS Photo Locator SD Card Type</b></p> <hr/> <p><b>User Manual</b></p>

## Copyright & Acknowledgements

---

innoXplore – *eXplore the latest innovations* –

www.innoXplore.com

Support: support@innoXplore.com

Sales / General inquiries : info@innoXplore.com

innoXplore and it's Logo are registered Trademarks

© innoXplore 2008

This guide is based on the manual, warranty and liability terms of the Original Equipment Manufacturer from this product. innoXplore markets the product under it's own brandname (OEM) and subject Manufacturer agreed on this. Therefore innoXplore cannot be held responsible for damages or claims which are higher than the purchasing amount of your product.

The information contained in innoXplore user's guides is believed to be correct at the time of printing. innoXplore reserves the right to change or modify any information or specifications without notice.

The contents of innoXplore user's guides are provided "as is."

Except as required by applicable law, no warranties of any kind, either express or implied including, but not limited to, the implied warranties of merchantability and fitness for a particular purpose, are made in relation to the accuracy reliability, or contents of this guide.

*NOTE: Changes or modifications made in the GPS Photo Locator, not expressly approved by innoXplore, will void the user's authority to operate the equipment.*

Edition 1

September 2009

## Product Warranty (1 years)

---

innoXplore warrants to you, the original purchaser, that each of its products will be free from defects in materials and workmanship for one year from the date of purchase.

This warranty does not apply to any products which have been repaired or altered by persons other than repair personnel authorized by innoXplore, or which have been subject to misuse, abuse, accident or improper installation. innoXplore assumes no liability under the terms of this warranty as a consequence of such events.

Because of innoXplore's quality-control standards and rigorous testing, most of our customers never need to use our repair service. If a innoXplore product is defective, it will be repaired or replaced at no charge during the warranty period. For out-of-warranty repairs, you will be billed according to the cost of replacement materials, service time and freight. Please consult your dealer for more details.

If you think you have a defective product, follow these steps:

1. Collect all the information about the problem encountered. (For example: innoXplore products used, other hardware and software used, etc.) Note anything abnormal and list any onscreen messages you get when the problem occurs.
2. eMail your Reseller and describe the problem. Please have your manual, product, and any helpful information readily available.
3. Carefully pack the defective product, and a photocopy proof of purchase date (such as your sales receipt) in a shippable container. A product returned without proof of the purchase date is not eligible for warranty service.

## Technical Support and Assistance

---

1. Visit the innoXplore web site at **www.innoXplore.com** where you can find the latest information about the product.
2. Contact your Sales Rep., or Reseller for technical support if you need additional assistance. Please have the following information ready before you call:
  - Product name and serial number
  - Description of your peripheral attachments
  - Description of your software (operating system, version, application software, etc.)
  - A complete description of the problem
  - The exact wording of any error messages

## Packing List

---

Before setting up the system, check that the items listed below are included and in good condition. If any item is damaged or missing, please contact your Purchasing point immediately.

- GPS Photo Locator unit
- USB Cable (optional accessory: innoXplore USB power charger)
- Car charger
- 2 GB Mini SD card with SD card adapter
  
- Required but not included - External Cardreader

## Charging the Battery

---

It will take about 3.5 hours to fully charge the battery when the unit is turned off. Please use the supplied chargers for faster charge. The GPS Photo Locator can be charged from any other PC / Notebook USB port, but charging time may be longer.

*At present export of data only by External Cardreader*

## Safety Instructions

---

Follow these simple precautions to protect yourself from harm and the products from damage.

**Caution!** *There is a danger of a new battery exploding if it is incorrectly installed or is exposed to high temperatures.*



*Do not attempt to recharge, force open, or heat the battery.*

*Replace the battery only with the same or equivalent type recommended by the manufacturer.*

*Discard used batteries according to the manufacturer's instructions.*

*Please avoid storing the device in an excessively hot or humid place.*

*Please do not leave the device in your car under direct sunshine with windows closed*

The GPS Photo Locator requires a GPS signal to record position. Without a GPS signal the GPS Photo Locator cannot record data.

**IMPORTANT:** *GPS (Global Positioning System) signals must have open or limited access to an open sky view. Without an open sky view they cannot report any valid locations.*

# Contents

<b>Chapter</b>	<b>1</b>	<b>Introduction .....</b>	<b>2</b>
	1.1	Introduction .....	2
	1.2	Key Features.....	3
	1.3	Built-in Battery.....	3
	1.4	Packing List.....	3
<b>Chapter</b>	<b>2</b>	<b>Getting Started .....</b>	<b>6</b>
	2.1	Power switch button .....	6
	2.2	Micro SD card slot. ....	6
	2.3	LEDs (getting started) .....	7
	2.3.1	RED: Charging LED.....	7
	2.3.2	BLUE: GPS LED.....	7
	2.3.3	GREEN: Power LED.....	7
	2.3.4	ORANGE: Storage LED.....	7
	2.4	Before powering on:.....	8
	2.5	Workflow for setting up the unit.....	8
	2.6	Inserting the Micro SD card .....	8
	2.7	Turn on the power .....	9
	2.8	Turn off the power.....	9
	2.9	File format.....	9
	A.1	What is geo-tagging?.....	12
	A.2	Downloading Locr software to geo-tag photos .....	12
	A.3	Using the Application.....	12
	A.3.1	Launch the application.....	12
	A.3.2	Add your photos.....	13
	A.3.3	Import your GPS data from your StarsNav GPS Logger..	14

# 1

## Introduction

# 1 Introduction

## 1.1 Introduction

---

Thank you for purchasing the GPS Photo Locator from innoXplore. innoXplore Photo Locator Logger is a very user friendly device. It's innovative design using micro SD cards as storage is unique. With Micro SD you can easily extend the storage capacity by as much as you like.

Unlike other GPS loggers, it does not have USB driver and configuration software. Simply place the Micro SD card into an external Cardreader (not included) and export the data to a PC (Windows or Mac). Its stored data can be used with most free geo-tagging software packages and web album services, such as Locr and Picassa.

With innoXplore photo locator/logger, organizing and geo-tagging your photos is simplicity itself - enjoy!



*GPS Photo Locator*

## 1.2 Key Features

---

- **Storage capacity**

Compatible with micro SD cards up to 2 GB, (512KB can hold 3.5 million location records, 1 GB can hold 6 million, and 2 GB can hold 14 million -162 days, for every second).

*Note: Currently the logger is not compatible with SDHC. But the smallest SDHC is 4GB.*

[http://en.wikipedia.org/wiki/Secure\\_Digital\\_card#SDHC](http://en.wikipedia.org/wiki/Secure_Digital_card#SDHC)

- **Complete and compatible GPS data formats**

Standard text file can be imported into any application. Location data includes Longitude, Latitude, Altitude, Time, Speed and Direction.

- **Installation and setup free**

Plug n Play, no installation or setup. Place Micro SD card in external cardreader and export data to PC

- **Supports Picassa, Locr, and Panoramio**

Supports most popular online photo libraries and location based services including Locr, Picassa and Panoramio.

- **Dimensions**

65.3 x 42.6 x 18.4 mm (L x W x H)

- **Light Weight Design**

Only 58g.

- **Low Power Consumption**

24 hours continuous use on single battery charge.

## 1.3 Built-in Battery

---

GPS Photo Locator comes with a built-in rechargeable 1100 mAh Li-ION battery. The fully charged battery can last 22 hours duration approx.

## 1.4 Packing List

---

- **1 x USB cable**
- **1 x Car adapter**
- **Micro SD card with SD card adapter**

**Optional Accessories: innoXplore Traveler adapter**

# 2

## Getting Started

## 2 Getting Started

### 2.1 Power switch button

---

The Power Switch button is located on the right side of the logger.



### 2.2 Micro SD card slot.

---

The Micro SD slot is located at the bottom of the device under a removable rubber cover.

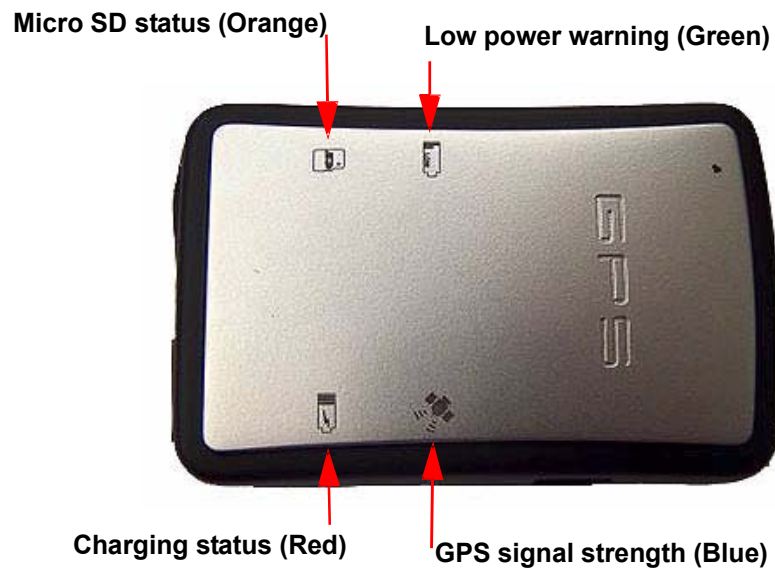


**Note:** Carefully open the rubber cover with minimal force.

## 2.3 LEDs (getting started)

---

The LED on the top of the device displays the following status:



### 2.3.1 RED: Charging LED.

**On:** Charging

**Off:** Fully charged / Not charging.

### 2.3.2 BLUE: GPS LED

**Blinking:** Located

**Off:** Not located.

### 2.3.3 GREEN: Power LED

**Blinking:** Periods are 8/5/3/1 seconds. Faster blinking means less power.

**Always on:** Power is nearly out. It's time to charge the battery!

### 2.3.4 ORANGE: Storage LED

**Blinking:** Records are being written to the Micro SD card.

**Always on:** The Micro SD is corrupted or not inserted correctly.

*At present export of data only by External Cardreader*

## 2.4 Before powering on:

---

Format MicroSD card in FAT16/32 formats.  
Charge the battery via USB.

## 2.5 Workflow for setting up the unit

---

Insert the Micro SD -> Turn on the power -> Data recording ->  
Turn off the power -> Remove Micro SD from the logger -> Copy  
data records to PC -> Use Geo tagging software.

## 2.6 Inserting the Micro SD card

---

Your Photo Locator has a special rubber Micro SD cover attached by a pin-type hinge.



**NOTE: SD card must be face-up.**

**NOTE: This card cover MUST be firmly in place for the unit to work correctly. Miss-placement will result in NO GPS data recording.**

## 2.7 Turn on the power

---

Keep pressing the power switch button for one second. After Blue/ Green/Orange LEDs are all on, release the button. The (Blue) GPS LED will stay on for 10 seconds. then go off.

**Note 1: Once on, Photo Locator will record GPS data every sec- ond.**

**Note 2: If the SD card cover is opened, the unit will power-off and all LEDs will turn off. You will need to close the cover and turn on the power again. (This is to protect the storage media.)**

## 2.8 Turn off the power

---

Keep pressing the button for 3 seconds. When the Blue/Green/ Orange LEDs are all on - release the button. The unit is now off. **Important Notes:**

1. GPS is always on.
2. At the start of power on, the storage LED ( orange ) may keep on for seconds because of the initialization of Micro SD. After the free space is found, it will be off.
3. The power will be off automatically if the cover of SD is opened. It is recommended to power off before removing the SD card

## 2.9 File format

---

All recorded files are sorted by GMT+0 time (see attached screen shot). The data is in NMEA-0183 format, and includes GPRMC and GPGGA. Below are examples of recorded data.

```
$GPRMC,174806.000,A,2502.9589,N,12129.4432,E,17.8,21.3,1  
5  
0808,,A*68
```

```
$GPGGA,174806.000,2502.9589,N,12129.4432,E,1,04,6.3,9  
3.9, M,26.0,M,0000*66
```

# A

## **Displaying Received Location Data on Satellite Map Servers**

Received GPS location data can be displayed on Locr, Google Earth and most satellite navigation maps.

## **A.1 What is geo-tagging?**

---

Geo-tagging, is the process of adding geographical identification meta data to various media such as websites, RSS feeds, or images and is a form of geo-spatial meta data. This data usually consists of latitude and longitude coordinates, though it can also include altitude, bearing, and place names.

## **A.2 Downloading Locr software to geo-tag photos**

---

With the free locr software you are able to geo-tag and upload photos automatically anywhere in the world.

To download the free Locr software go to this URL and download:

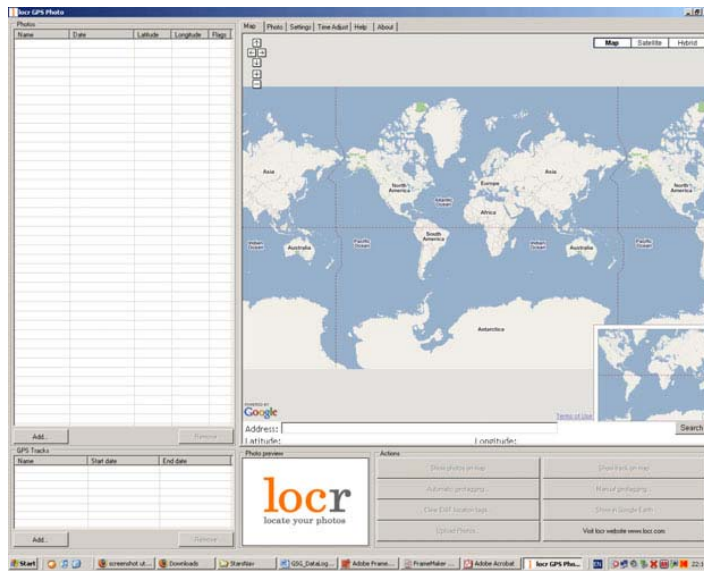
**<http://www.locr.com/downloads>**

Simply double click the executable file to install the application.

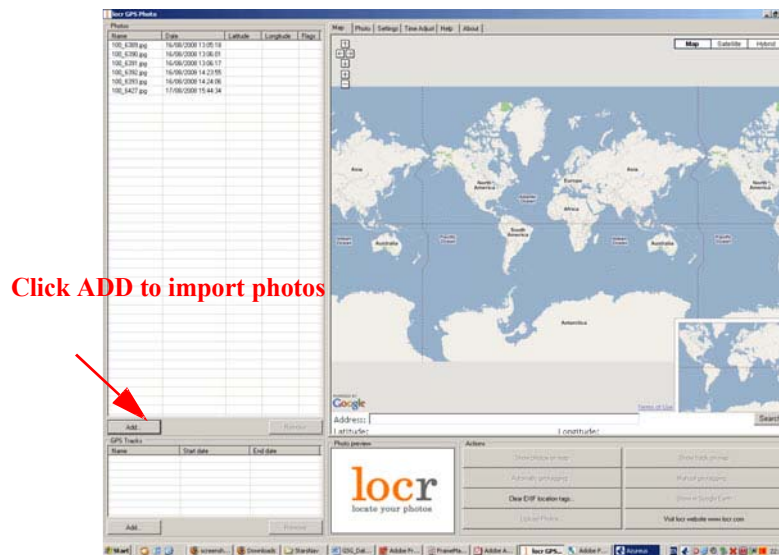
## **A.3 Using the Application**

---

### **A.3.1 Launch the application**



### A.3.2 Add your photos



### A.3.3 Import your GPS data from your innoXplore GPS Logger

The screenshot shows the Locr application window. On the left, there is a table with columns: Name, Date, Latitude, Longitude, Photo. The table contains several rows of data. A red arrow points to the 'Photo' column header. Below the table is an 'ADD' button. On the right, there is a world map. A red arrow points to the map area. Below the map is a search bar and a 'Photo panel' section with buttons for 'Automatic geotagging' and 'Clear GPS location tags...'. A red arrow points to the 'Automatic geotagging' button. At the bottom left, there is another 'ADD' button. A red arrow points to this button.

**Locr will automatically synchronize geographical location with photos**

**Locr will automatically synchronize gps data only if you click auto geo-tagging button.**

**Click ADD to import data**